

Rev. 1 | Data 31/03/2015 | Nota:



PTMatic S.r.l.
Via Giotto, 1
20010 Bareggio (MI)
www.ptmatic.it

CODIFICA DISEGNO:

99176.R1.-Arch.-TMATIC.2011.dwg

OGGETTO:

**Plan and views-TMATIC mod. "Amsterdam"
swinging door**

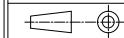
Materiale:

Note:

Tavola

Scala

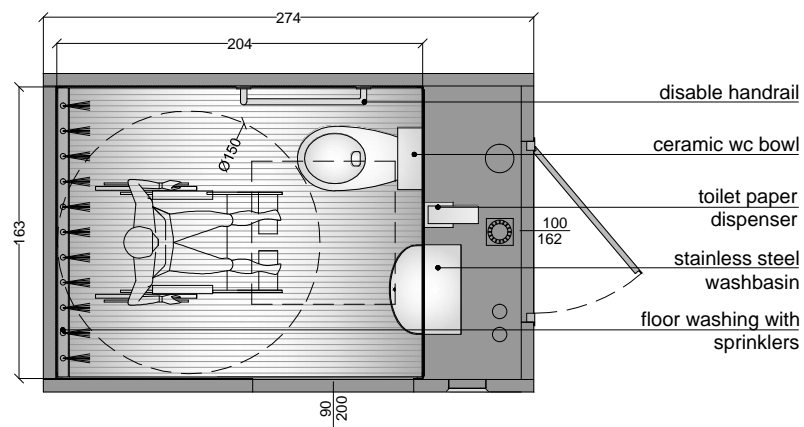
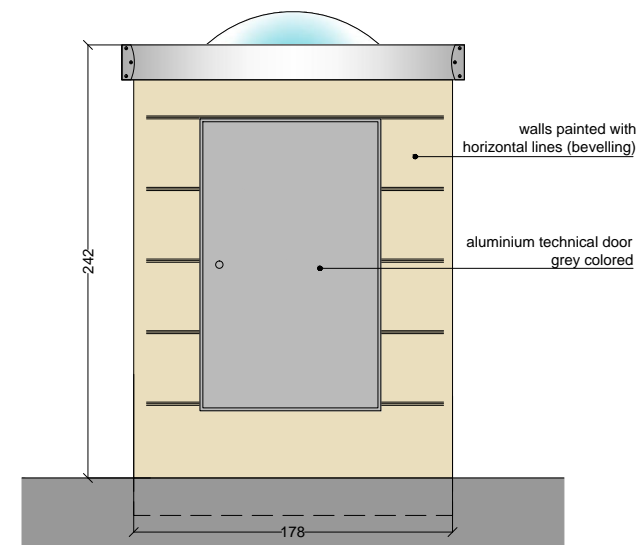
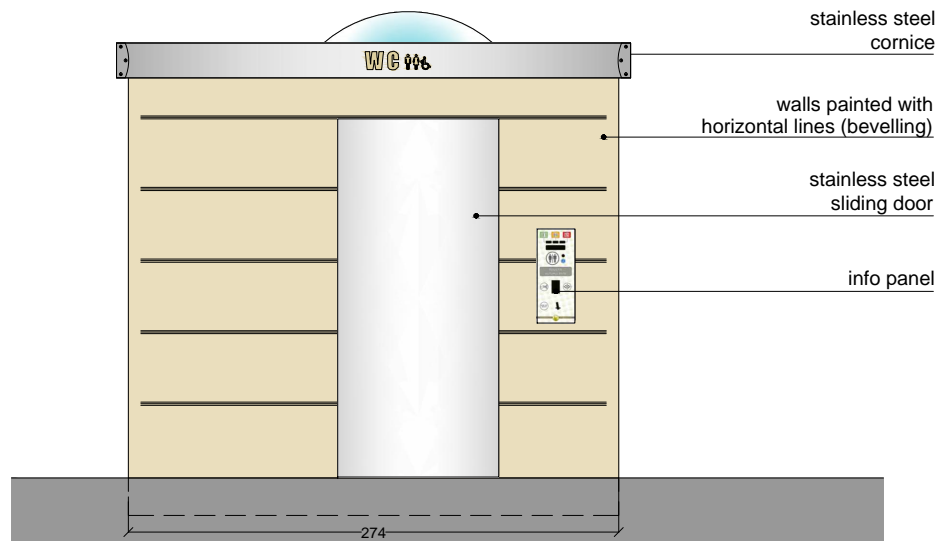
1:30



Dis. da

L. Preti

Appr. da



Rev. 1 Data 31/03/2015 Nota:



PTMatic S.r.l.
Via Giotto, 1
20010 Bareggio (MI)
www.ptmatic.it

CODIFICA DISEGNO:

99176.R1.-Arch.-TMATIC.2011.dwg

OGGETTO:

**Plan and views-TMATIC mod. "Amsterdam"
sliding door**

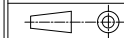
Materiale:

Note:

Tavola

Scala

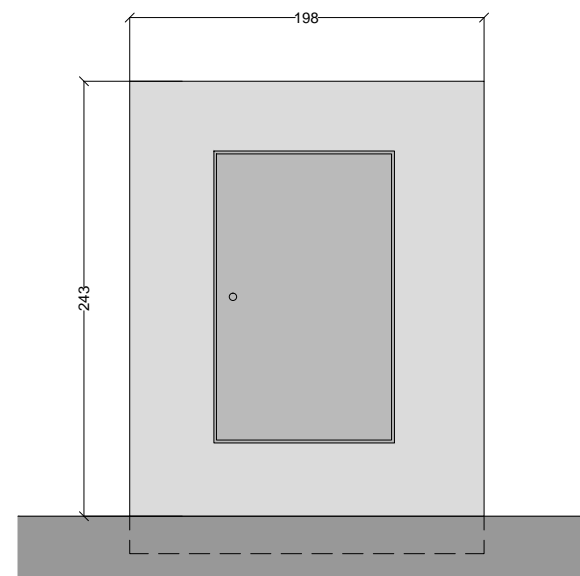
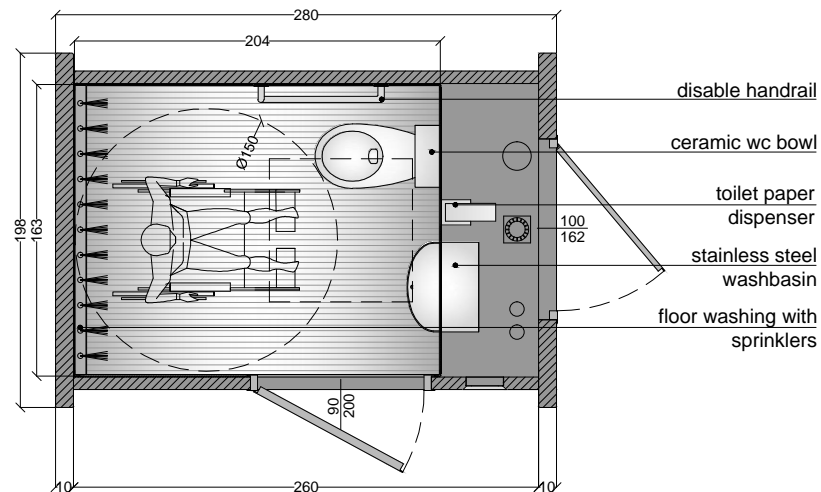
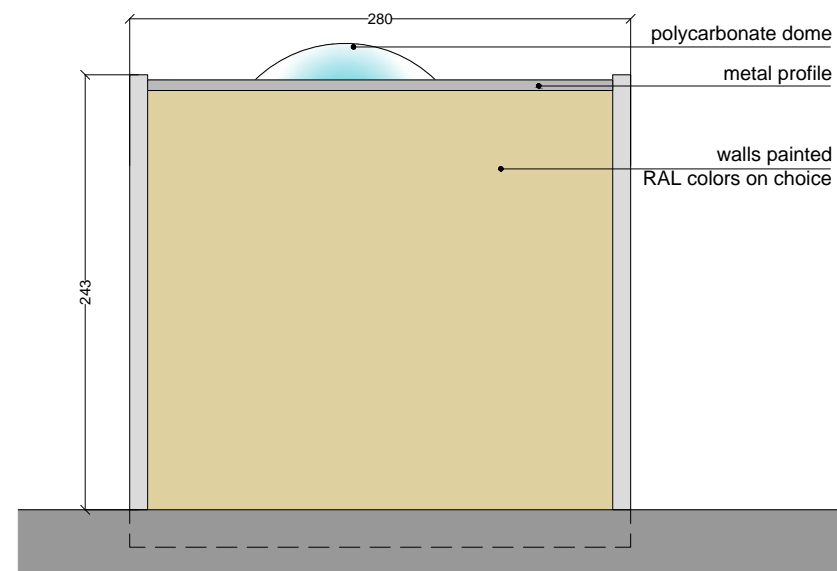
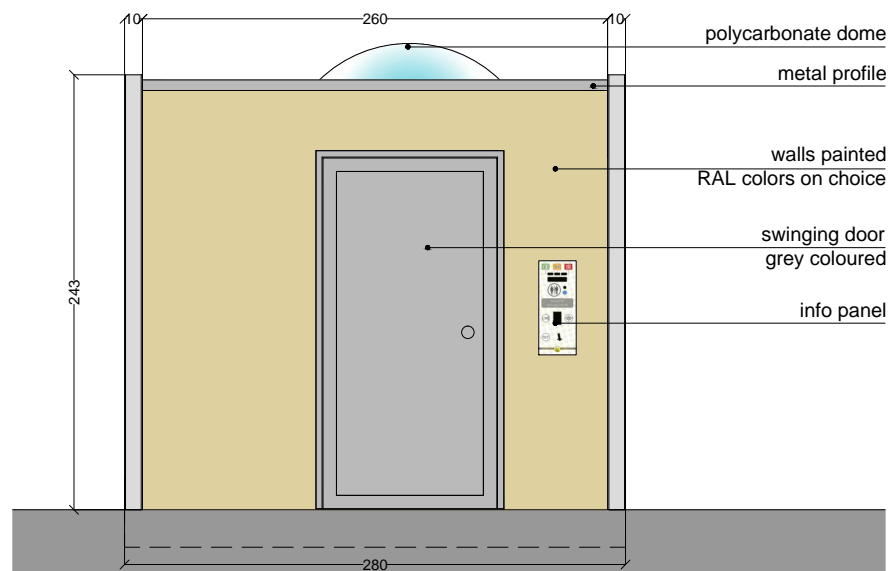
1:30



Dis. da

L. Preti

Appr. da



Rev. 1 Data 31/03/2015 Nota:



PTMATIC S.r.l.
Via Giotto, 1
20010 Bareggio (MI)
www.ptmatic.it

CODIFICA DISEGNO:

99176.R1.-Arch.-TMATIC.2011.dwg

OGGETTO:

**Plan and views-TMATIC mod. "Base"
swinging door**

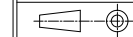
Materiale:

Note:

Tavola

Scala

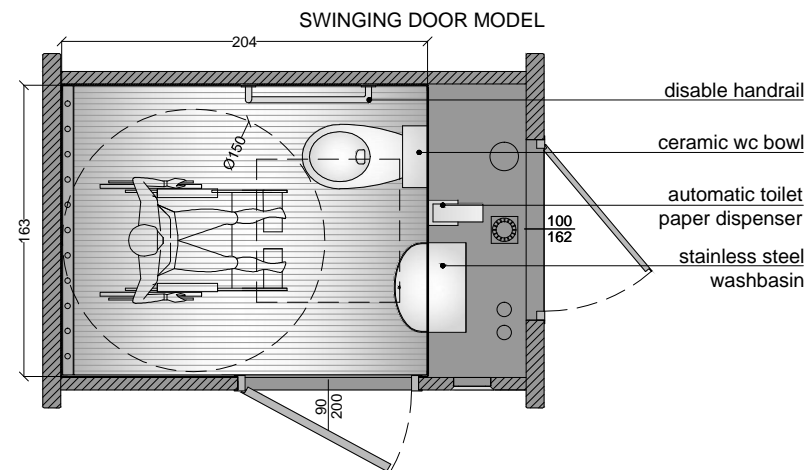
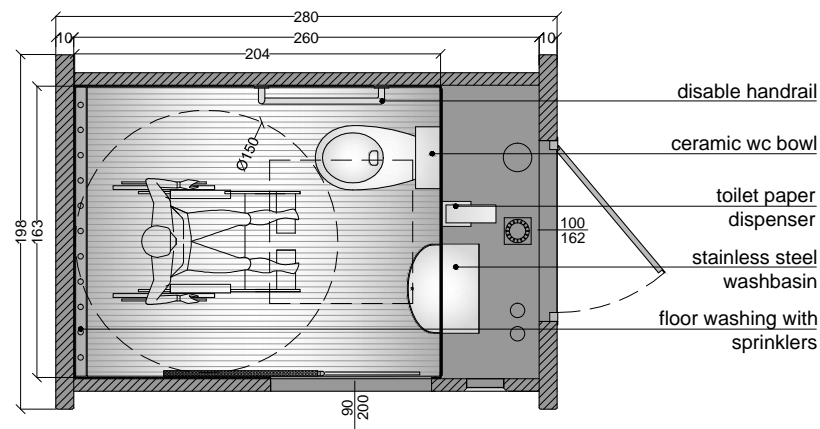
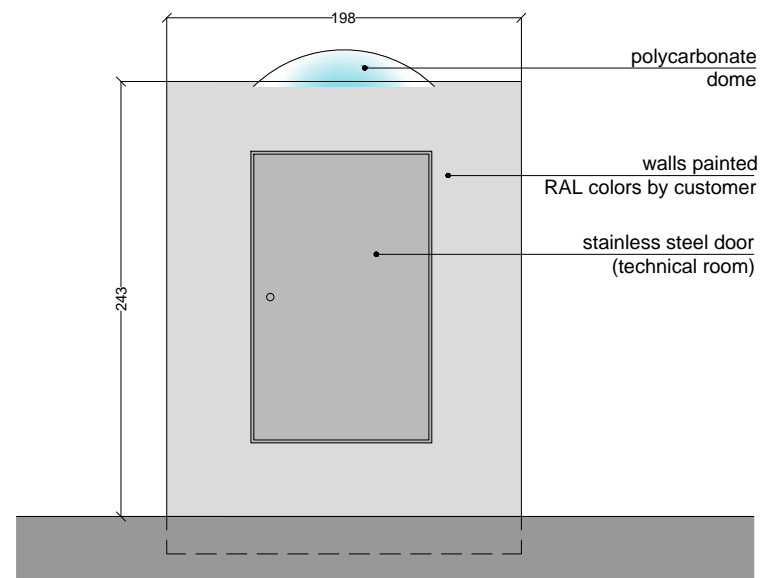
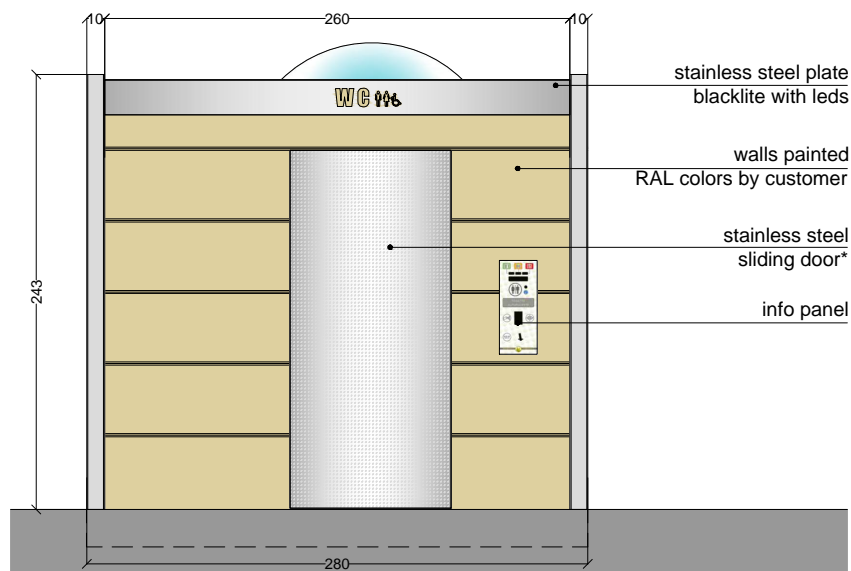
1:30



Dis. da

L. Preti

Appr. da



Rev. 1 Data 31/03/2015 Nota:



PTMatic S.r.l.
Via Giotto, 1
20010 Bareggio (MI)
www.ptmatic.it

CODIFICA DISEGNO:

99176.R1.-Arch.-TMATIC.2011.dwg

OGGETTO:

Plans and Views-TMATIC model "Milano"

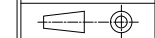
Materiale:

Note:

Tavola

Scala

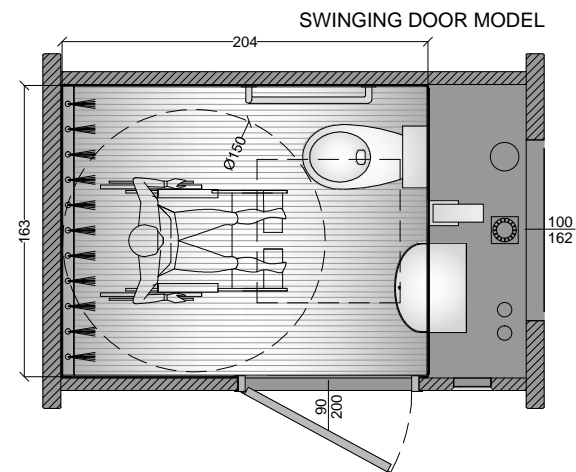
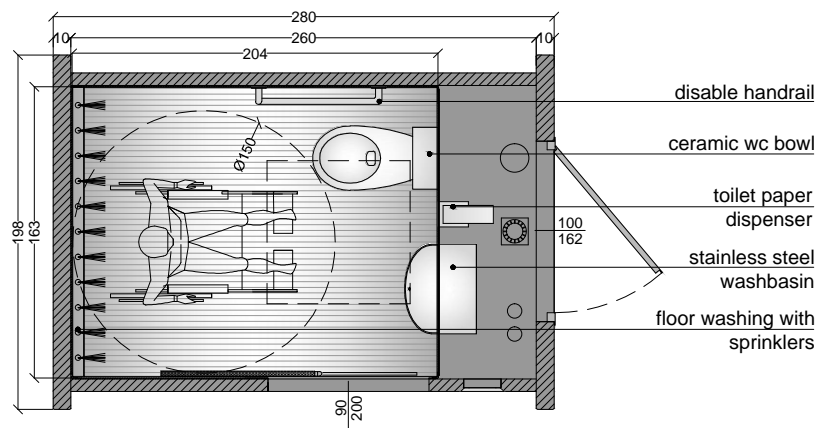
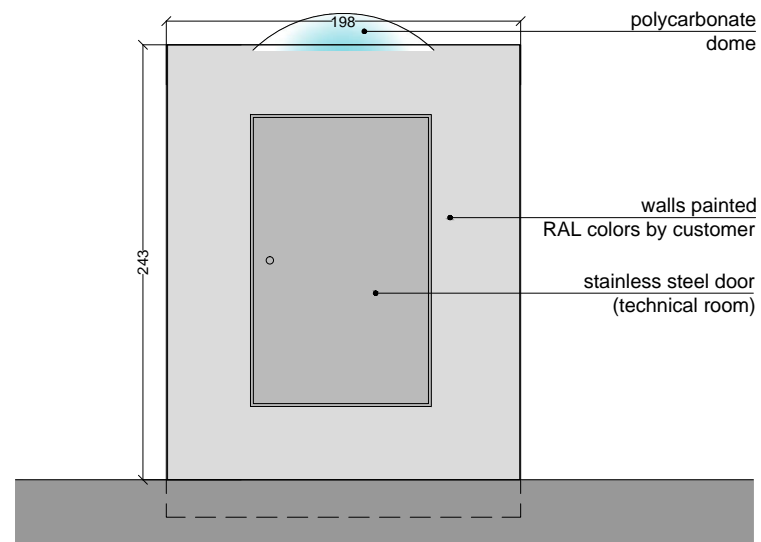
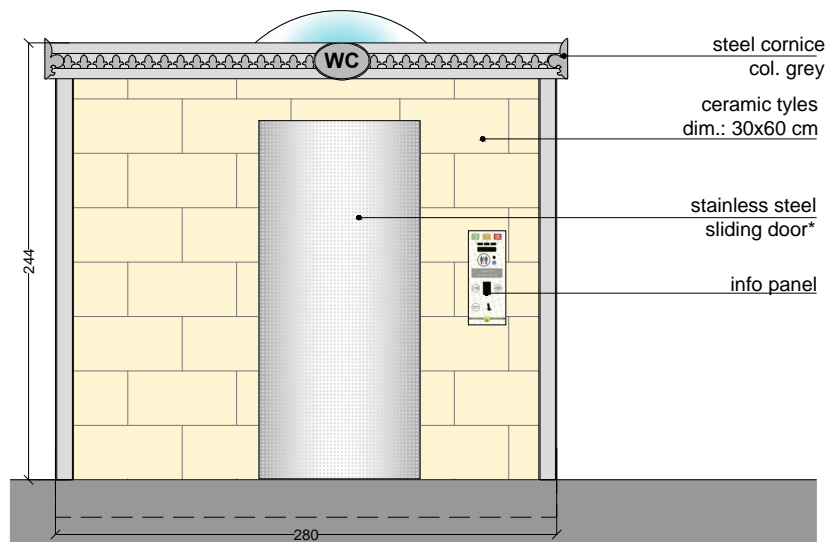
1:30



Dis. da

L. Preti

Appr. da



Rev. 1 Data 31/03/2015 Nota:



PTMatic S.r.l.
Via Giotto, 1
20010 Bareggio (MI)
www.ptmatic.it

CODIFICA DISEGNO:

99176.R1.-Arch.-TMATIC.2011.dwg

OGGETTO:

Plans and Views-TMATIC model "Venezia"

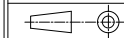
Materiale:

Note:

Tavola

Scala

1:30



Dis. da

L. Preti

Appr. da